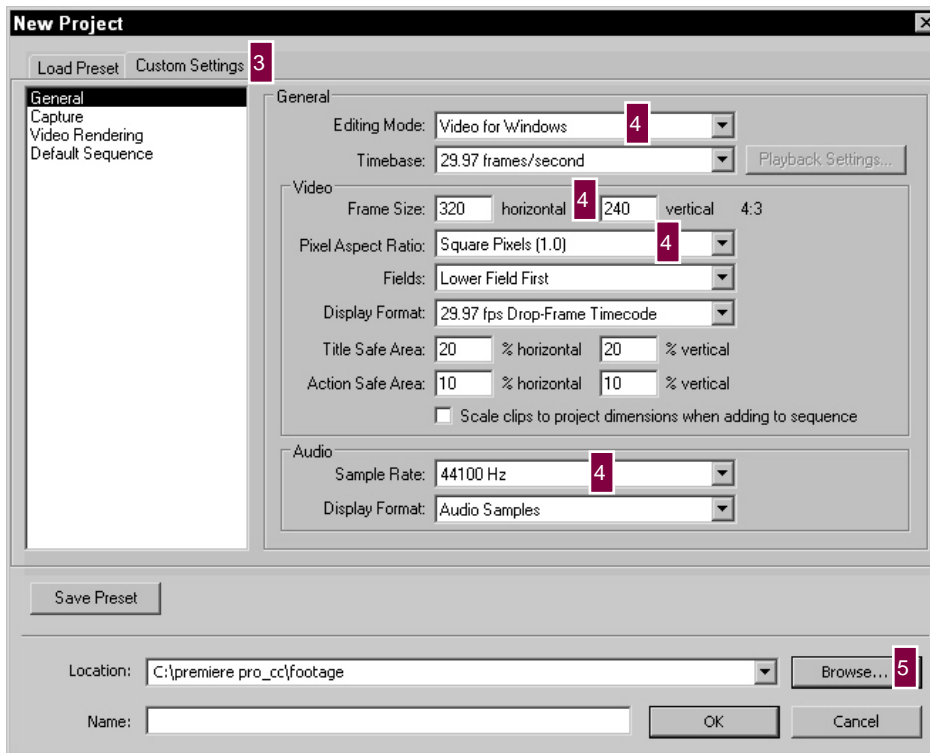


Session 1 Errata: 543490 -- Premiere Pro Complete Course.
Includes replacement image and steps 3 and 4, page 38.



3. Click the Custom Settings tab to open a list of panels.

The General tab displays.

4. Choose these options in the General tab:

- >> Click the Editing Mode option and select Video for Windows
- >> Click the horizontal frame size field to activate it and type 320; click the vertical frame size field to activate it and type 240
- >> Click the Pixel Aspect Ratio and choose Square Pixels (1.0)
- >> Click the Sample Rate in the Audio segment of the panel and choose 44100 Hz.

5. Click Browse to open the Browse For Folder dialog box.

You have to specify a storage location for your project and its files.

<NOTE>

The Load Preset tab displays when you start a new project. Premiere includes a collection of presets that you can use to save time when starting a project. The presets are included in one of two digital editing modes, either DV-NTSC or DV-PAL. The project uses media from a number of sources, including QuickTime, still images, and VFW (Video for Windows) formats.